



Information Technology Group
Infrastructure Planning Services

Basic Infrastructure Review for: BCO PRD

Summary

This series of reports are for all devices that report and are associated with the BMC TrueSight Capacity Optimization Application APP00005905.

Generally the focus is on the last day, however the last week is included to give context and show short term trends.

While the reports here are static, the tool that created them can show more history, different data granularity, other systems and other metrics.

Available at <https://bmcbco.fyiblu.com/console/>

The reader should be looking for anomalies more than absolute values. A metric that has a low value but is recently erratic is more interesting than a high value that is stable. Similarly, an volatile but consistent pattern is less concerning than an erratic, unpredictable metric, regardless of absolute values

Table of contents

Analysis: CPU, MEM, Swap, RunQueue - AVG

Analysis: Disk Used PCT

Analysis: Business Drivers

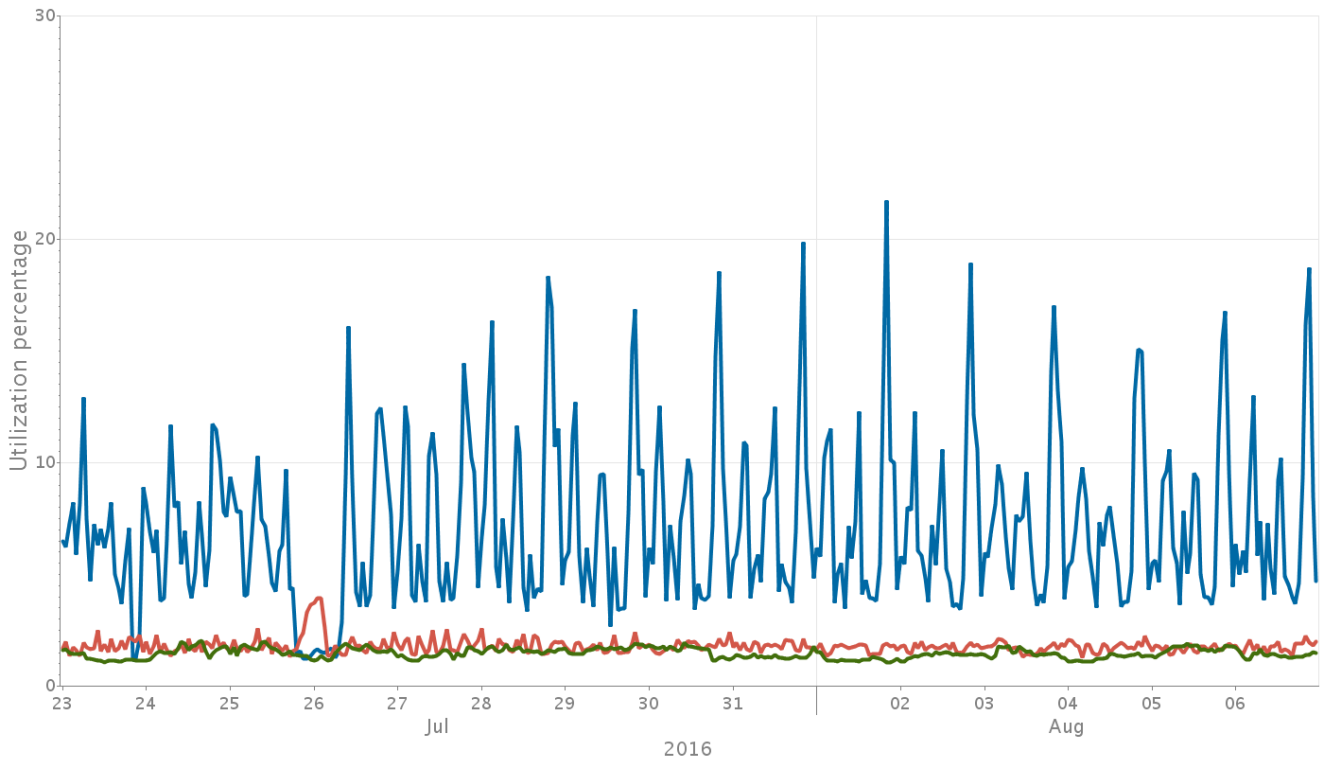
Analysis: Database Servers

Analysis: CPU, MEM, Swap, RunQueue for BMC Capacity Optimization (BCO) Distributed PRD

Analysis: Min Idle Workers

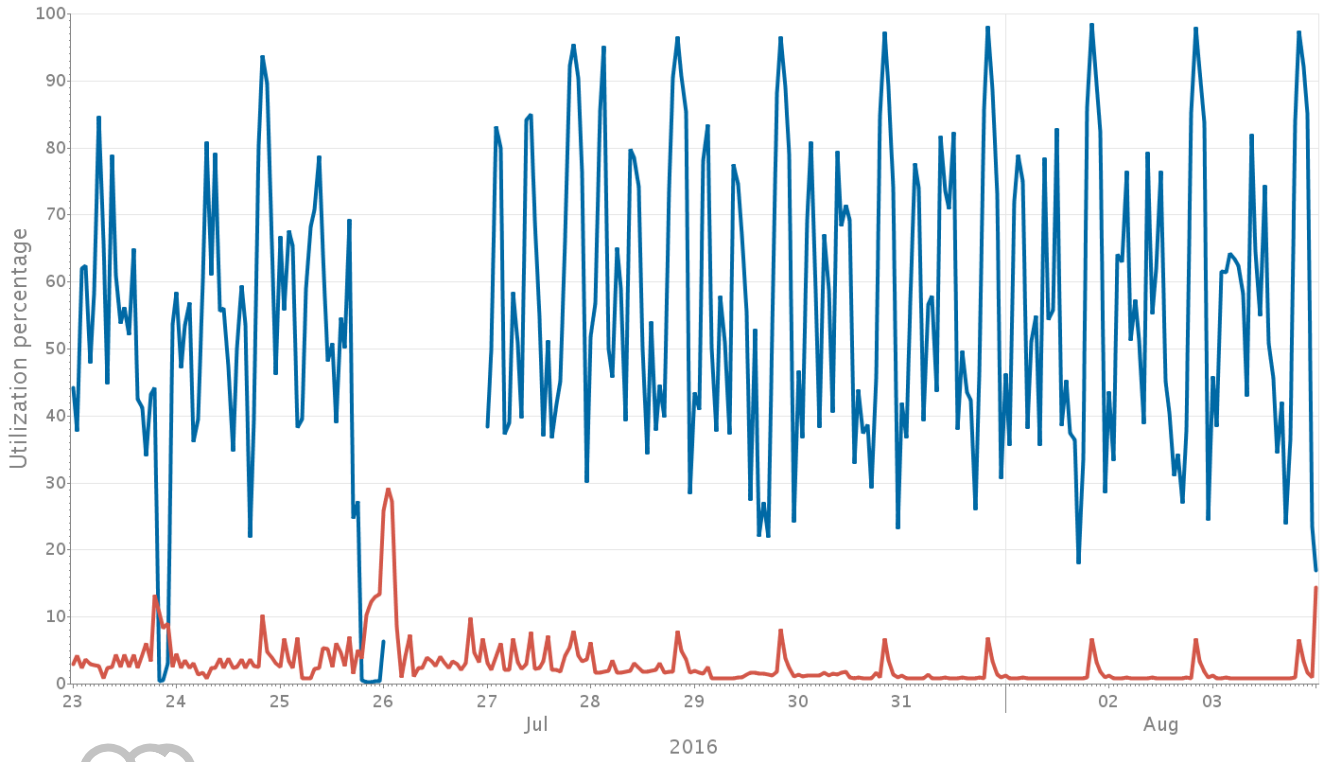
Analysis: CPU, MEM, Swap, RunQueue - AVG

CPU Run Queue Length (hourly)



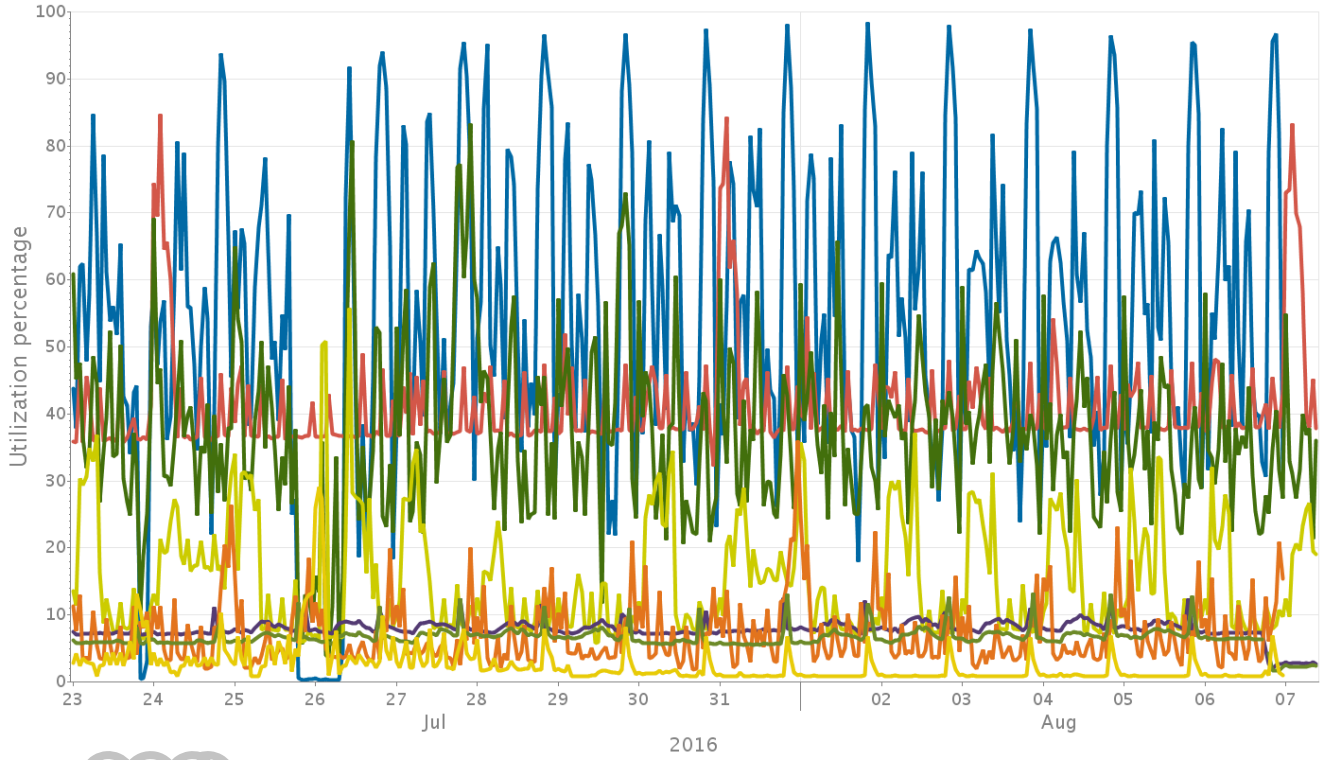
- pwausxbncdb01p-CPU Run Queue Length [AVG]
- pwausxbncdb02p-CPU Run Queue Length [AVG]
- pwausxsmtdb01-CPU Run Queue Length [AVG]

CPU Utilization % from NMON (hourly)



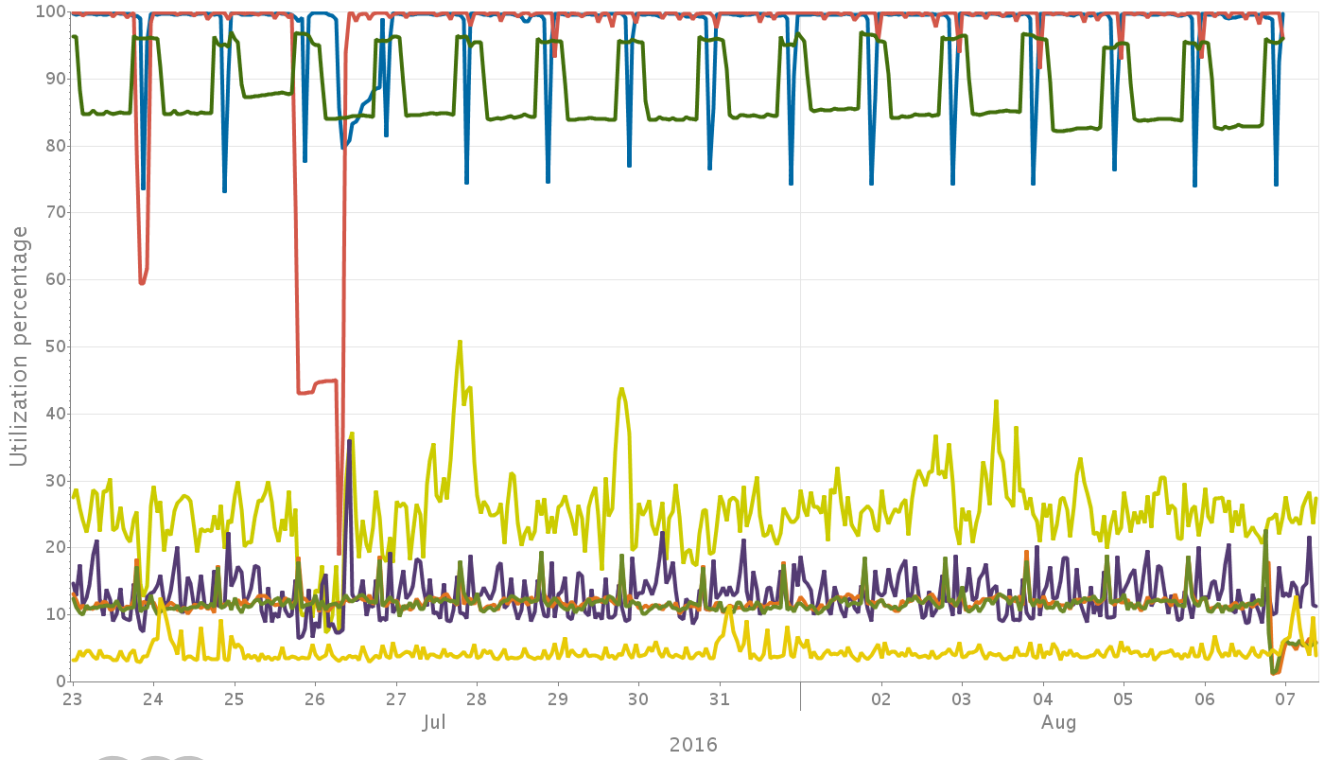
— pwaus-comcdb01p-CPU Utilization % from NMON [AVG]
— pwaus-comcdb02p-CPU Utilization % from NMON [AVG]



CPU Utilization % (hourly)



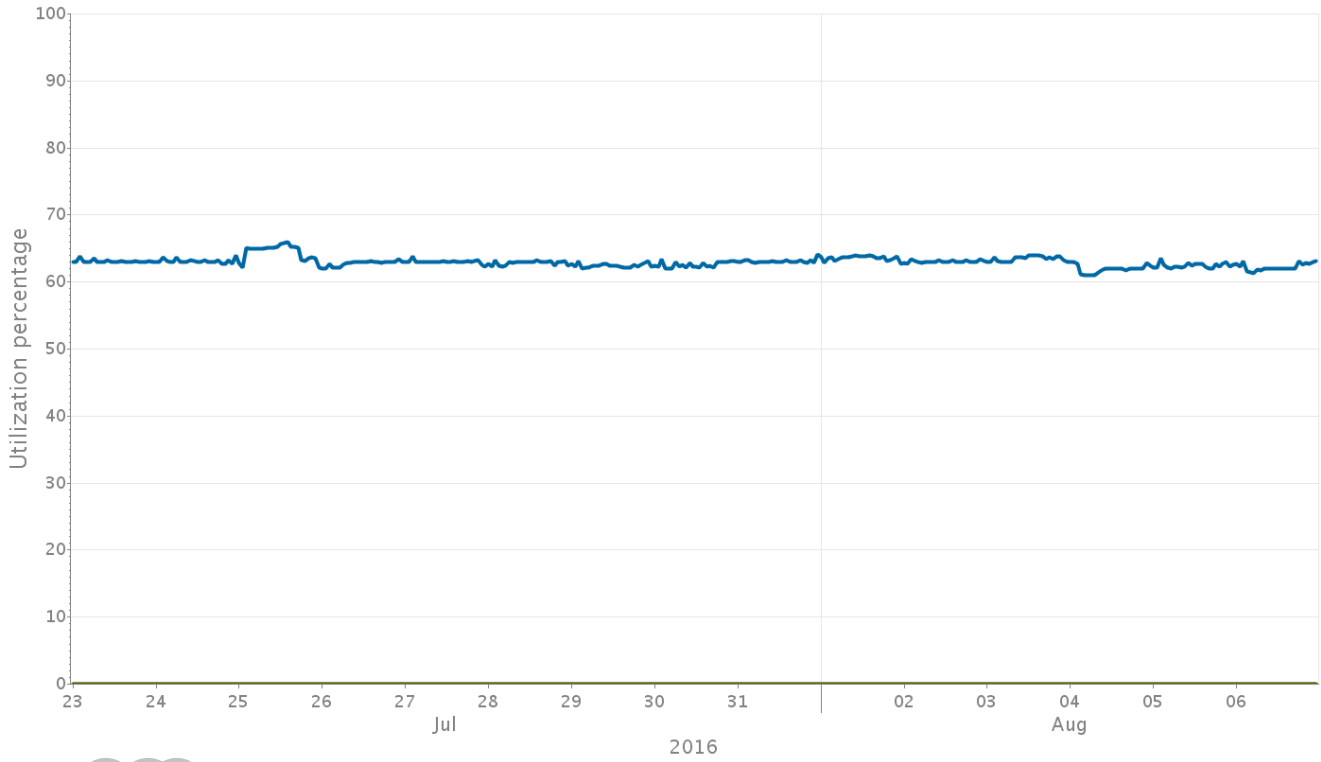
- pwausxbrdb01p-CPU Utilization % [AVG]
- pwauswbip02-CPU Utilization % [AVG]
- pwauslbmapp01-CPU Utilization % [AVG]
- pwauslbmapp02-CPU Utilization % [AVG]
- pwauslihsxy03-CPU Utilization % [AVG]
- pwausssmb01-CPU Utilization % [AVG]
- pwauslihsxy04-CPU Utilization % [AVG]
- pwausxbrdb02p-CPU Utilization % [AVG]

Memory Utilization % (hourly)



-  pwausxb-ncdb02p-Memory Utilization % [AVG]
-  pwausxb-ncdb01p-Memory Utilization % [AVG]
-  pwaussm-tdb01-Memory Utilization % [AVG]
-  pwauslb-capp01-Memory Utilization % [AVG]
-  pwauslb-capp02-Memory Utilization % [AVG]
-  pwausli-oxy04-Memory Utilization % [AVG]
-  pwausli-oxy03-Memory Utilization % [AVG]
-  pwausw-map02-Memory Utilization % [AVG]

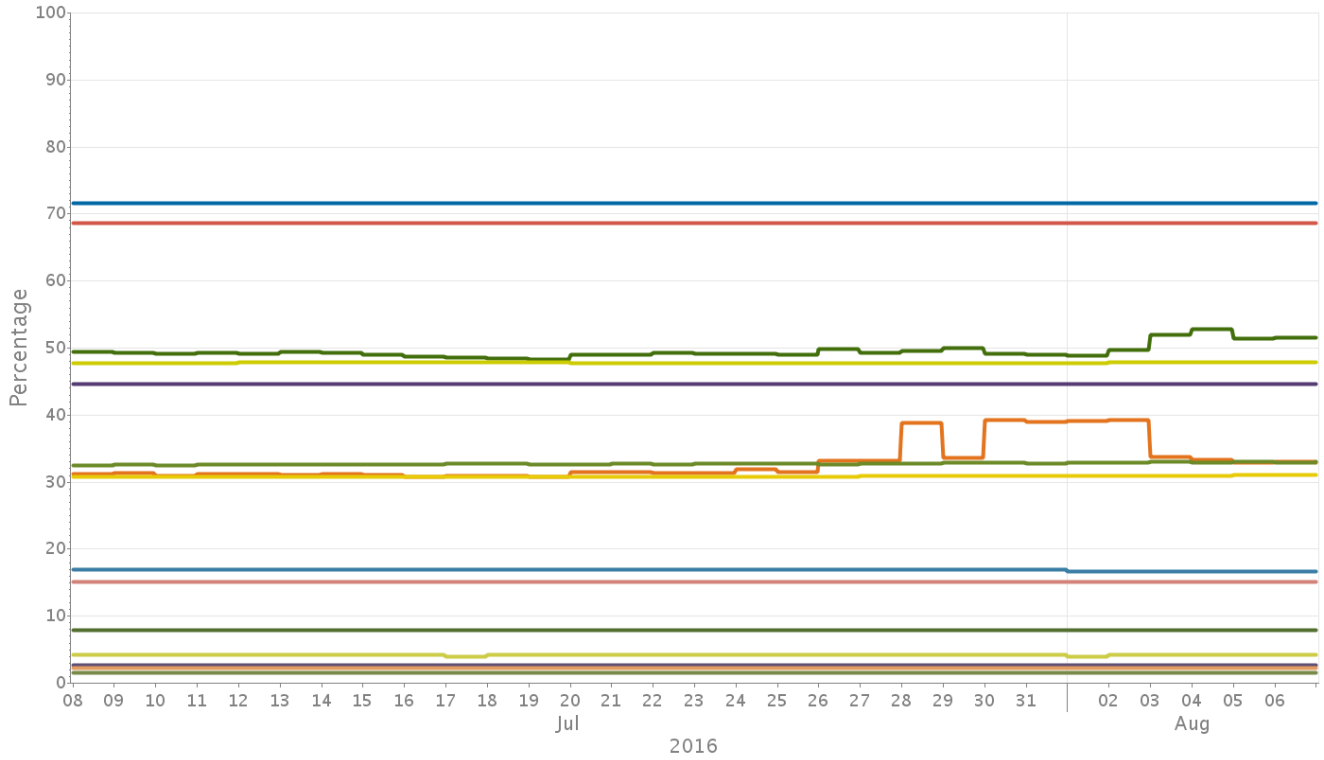
Swap Space Utilization % (hourly)



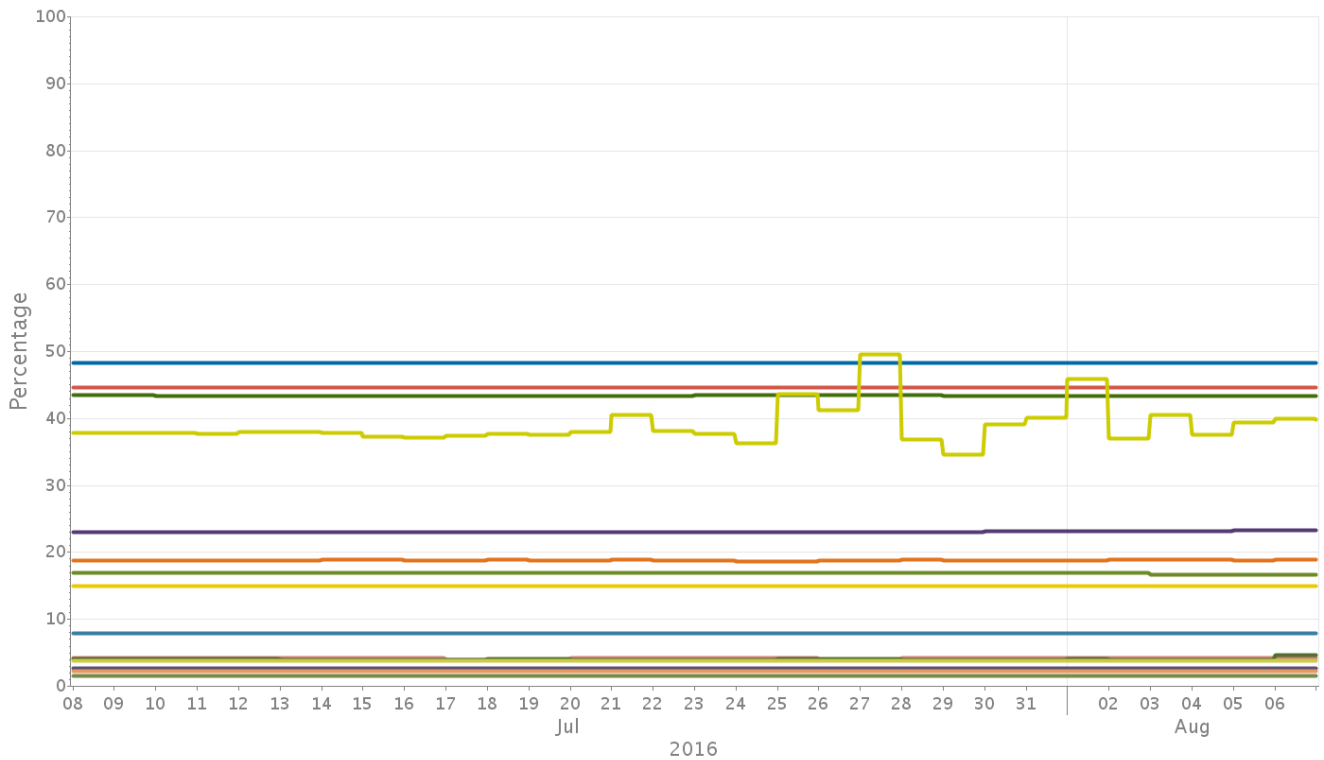
-  pwaussx\intdb01-Swap Space Utilization % [AVG]
-  pwaussx\mcdb01p-Swap Space Utilization % [AVG]
-  pwaussx\mcdb02p-Swap Space Utilization % [AVG]

Analysis: Disk Used PCT

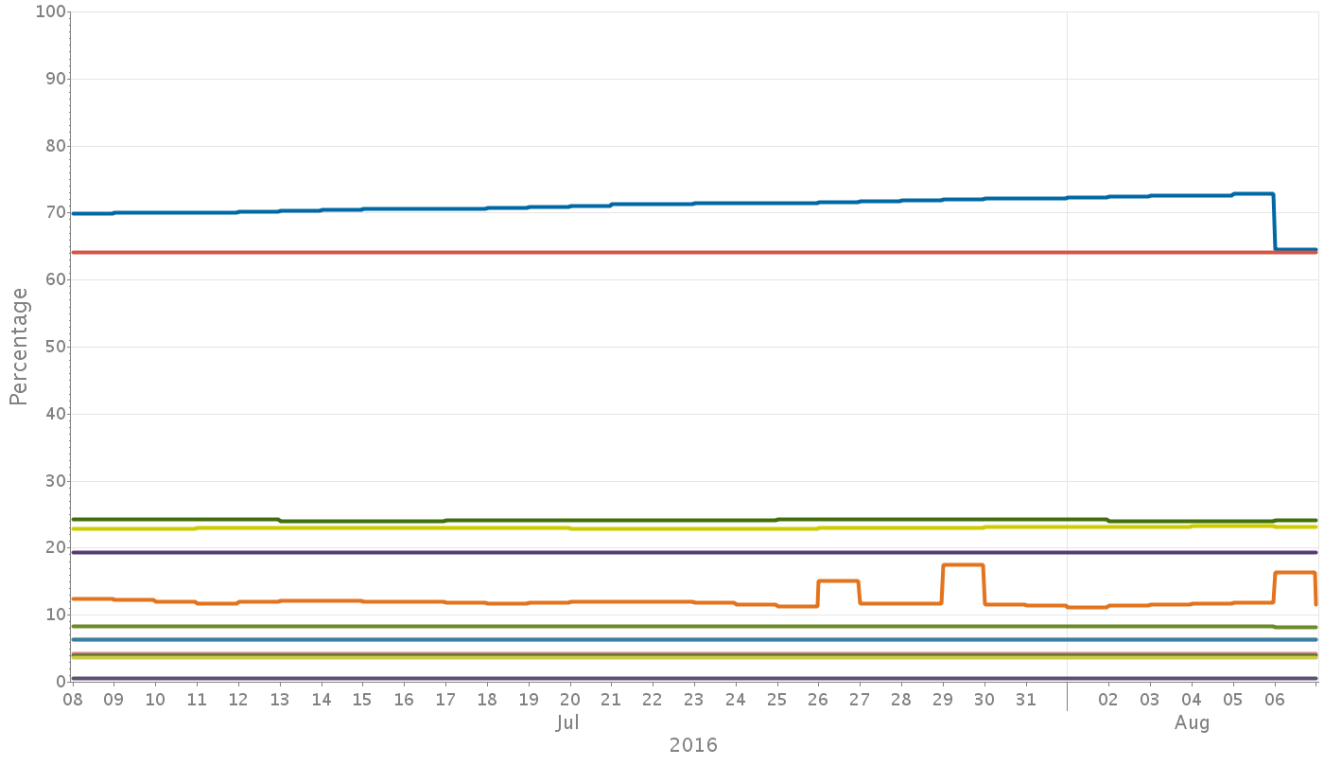
pwaislbrcapp01
(hourly)



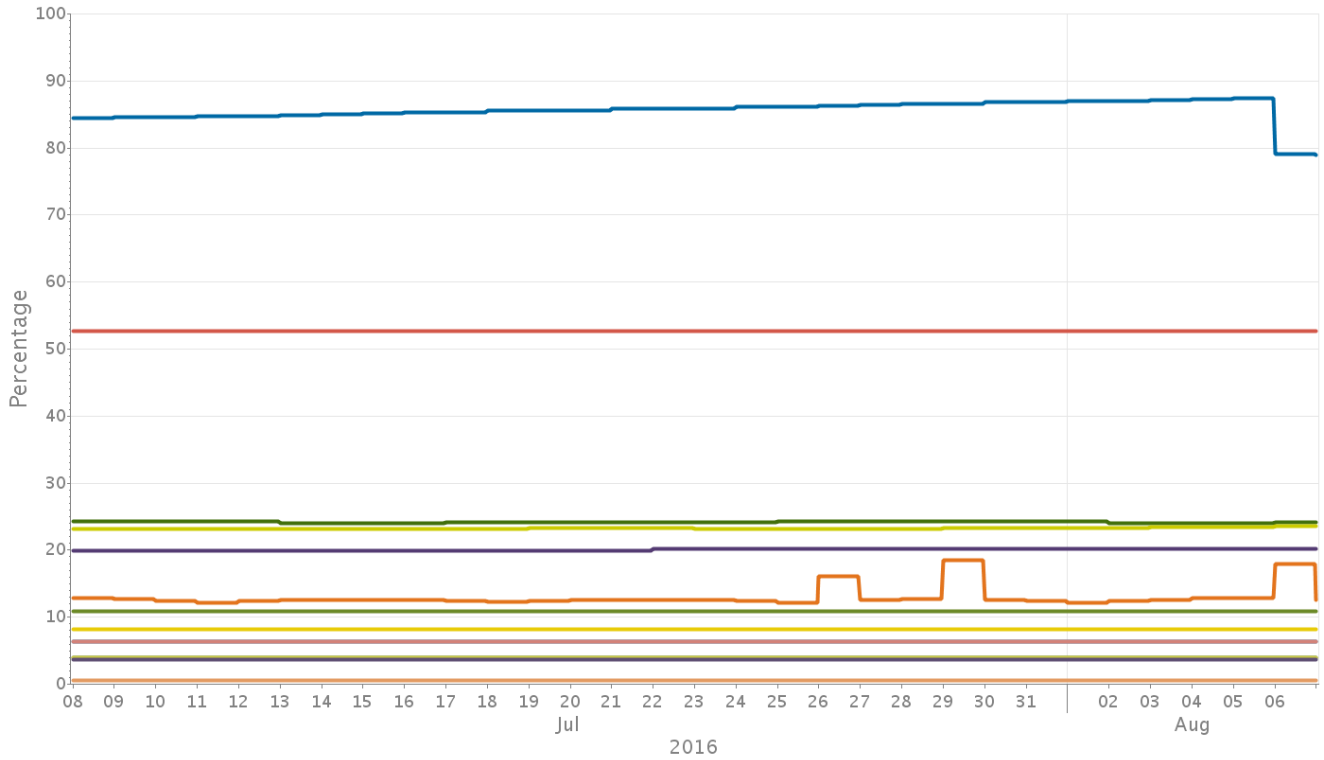
pwaislbrcapp02
(hourly)



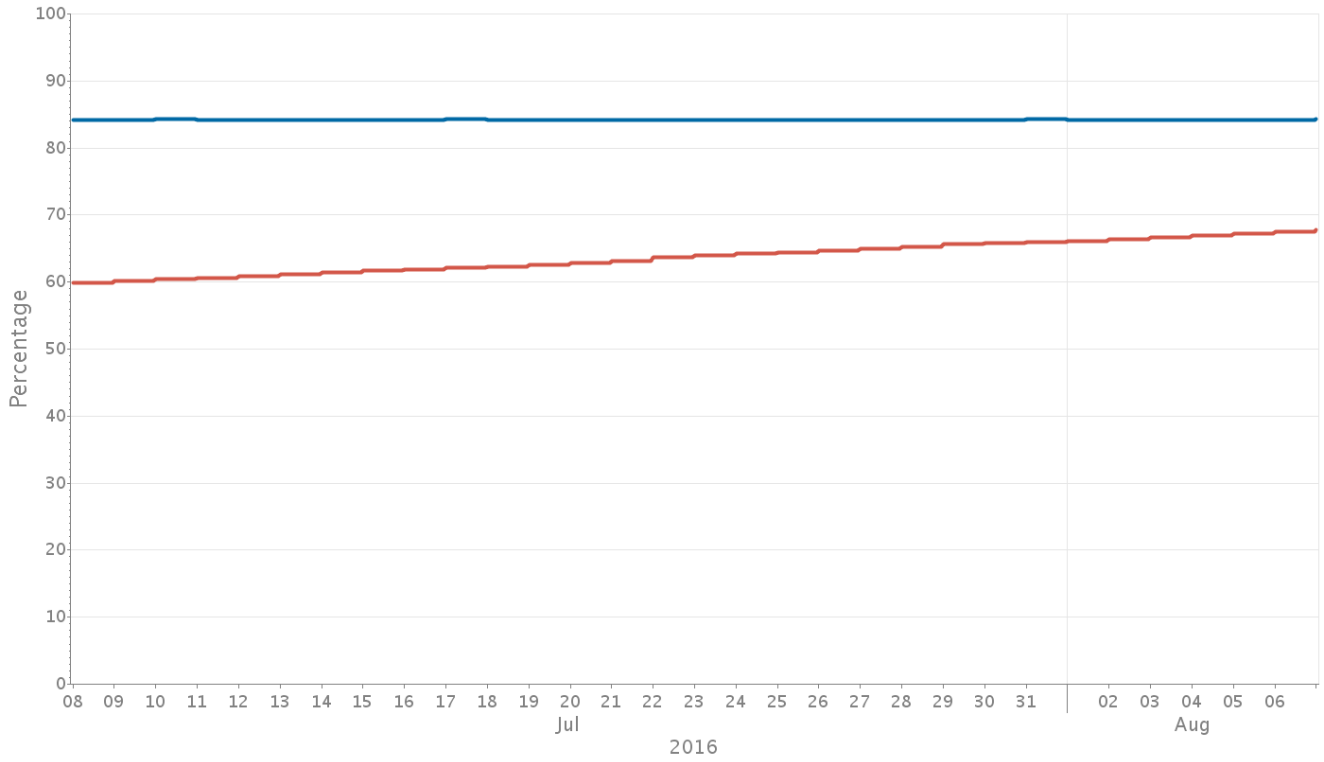
privatehspxy03
(hourly)



privatehspxy04
(hourly)

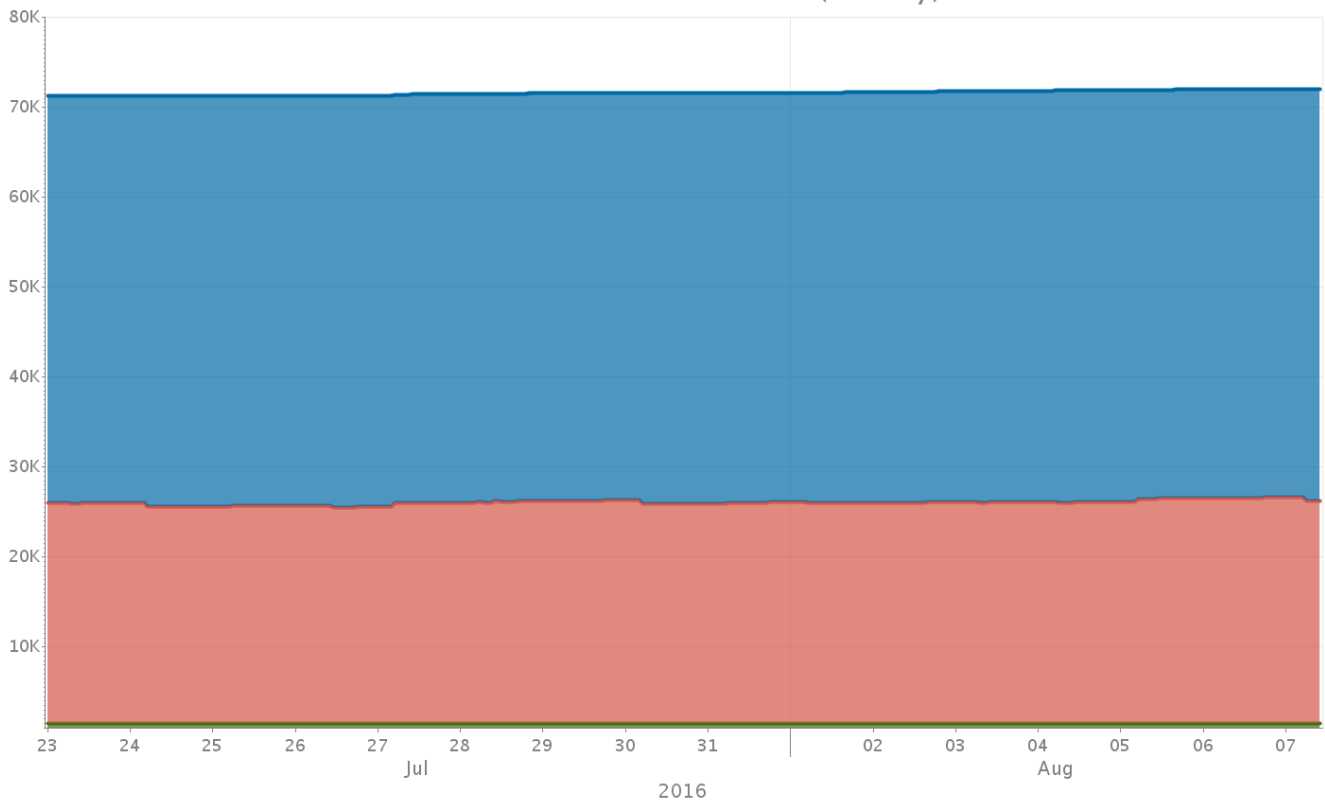


pwauswomap02
(hourly)



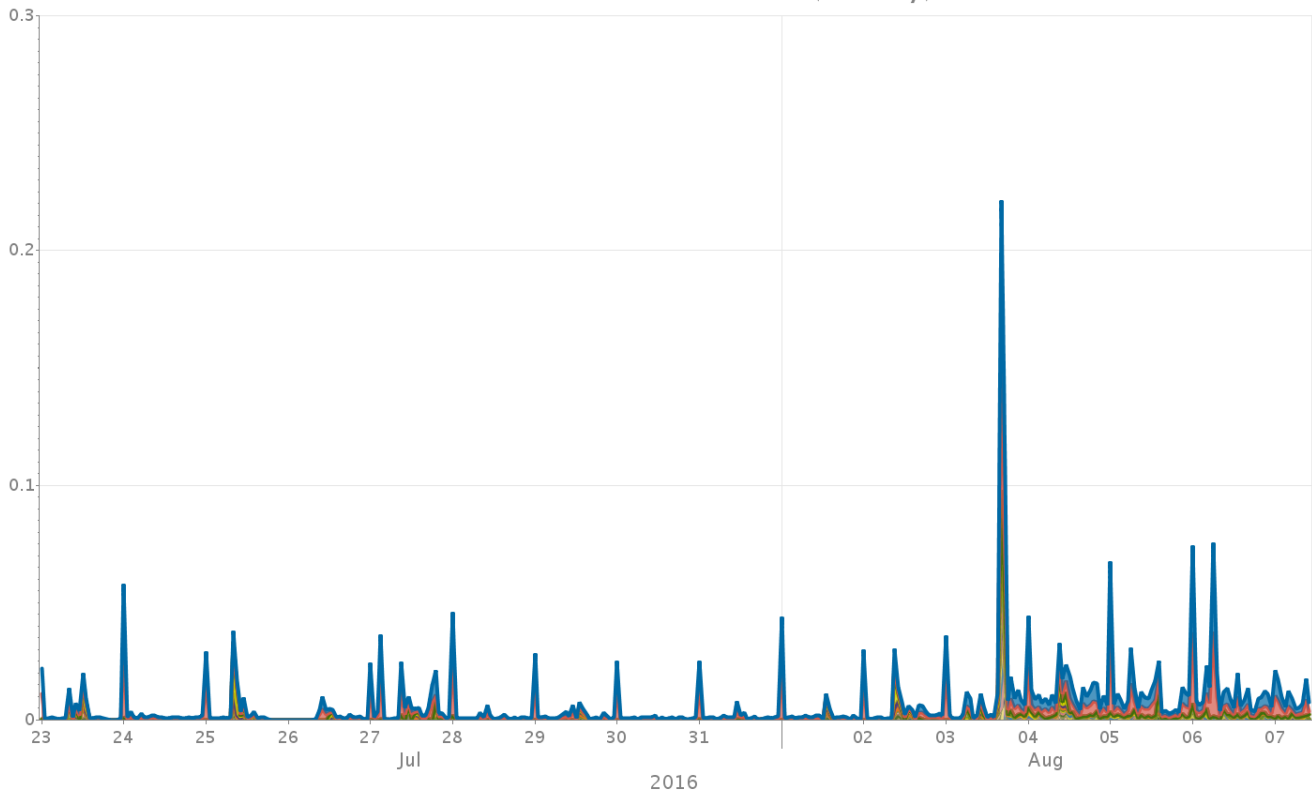
Analysis: Business Drivers

Total Volume - Stacked - (hourly)



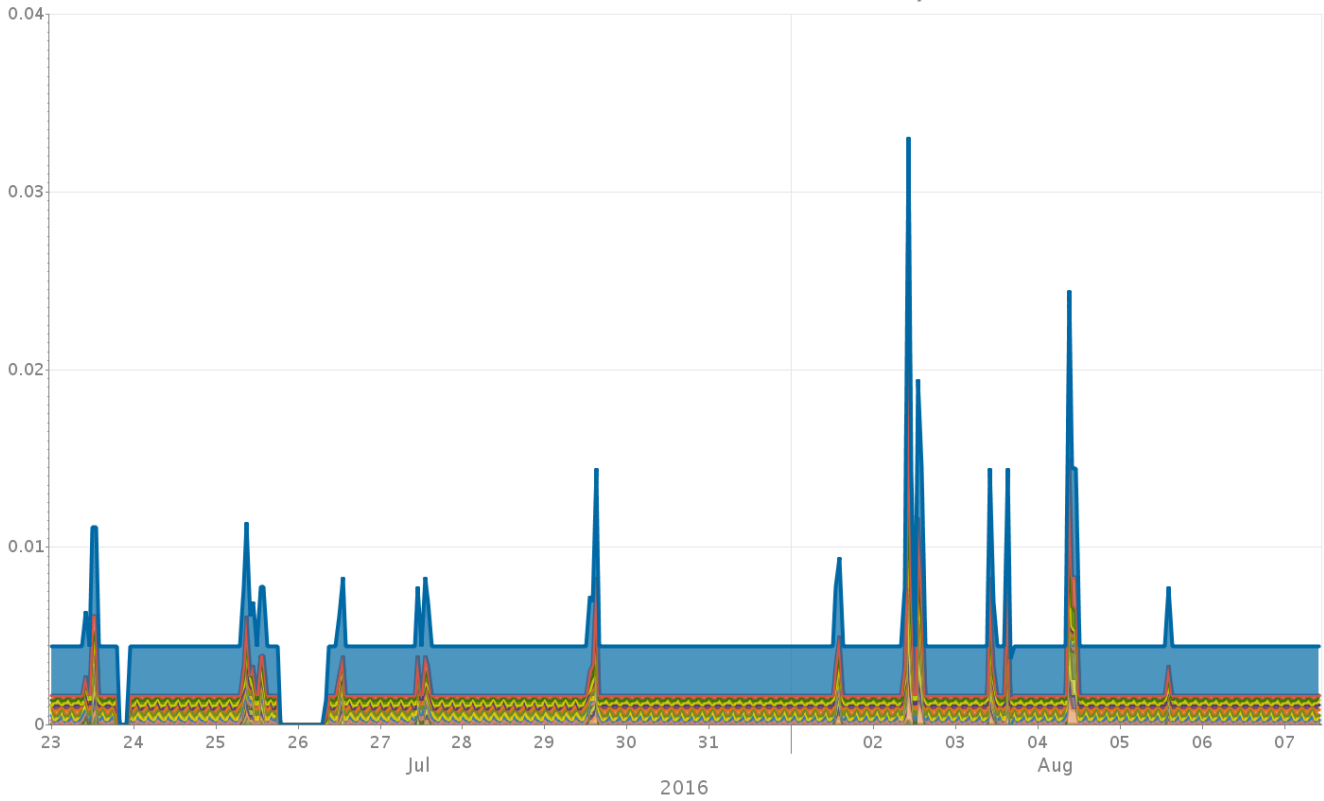
- DatasourcesLoad-Number of active entities [MAX]
- DatasourcesLoad-Number of unassigned entities [MAX]
- DatasourcesLoad-Number of newly discovered entities [MAX]

Total Volume - Stacked - (hourly)



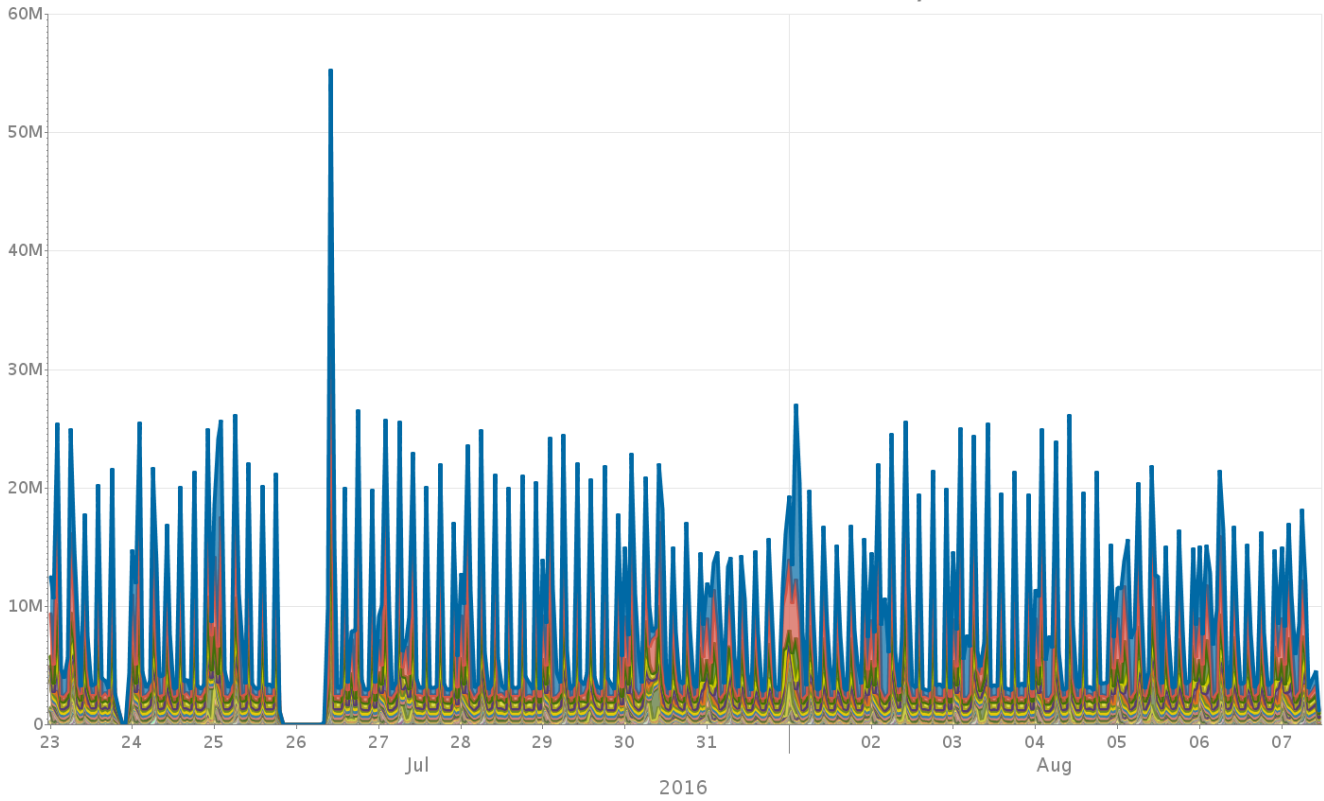
- PlacementAdviceService-API Calls Response Time [AVG]
 - PlacementAdviceService-API Calls queue time [AVG]
 - PlacementAdviceService-By scenario API Calls response time-537 [AVG]
 - PlacementAdviceService-By scenario API placement calls response time-539 [AVG]
 - PlacementAdviceService-By scenario API Calls response time-540 [AVG]
 - PlacementAdviceService-By scenario API Calls response time-541 [AVG]
 - PlacementAdviceService-By scenario API Calls response time-542 [AVG]
 - PlacementAdviceService-By scenario API Calls response time-543 [AVG]
 - PlacementAdviceService-By scenario API Calls response time-544 [AVG]
 - PlacementAdviceService-By scenario API placement calls response time-549 [AVG]
 - PlacementAdviceService-By scenario API Calls response time-549 [AVG]
 - PlacementAdviceService-By scenario API Calls response time-550 [AVG]
 - PlacementAdviceService-By scenario API Calls response time-54 [AVG]
 - PlacementAdviceService-By scenario API Calls response time-54 [AVG]
 - PlacementAdviceService-By scenario API Calls queue time-542 [AVG]
 - PlacementAdviceService-By scenario API Calls queue time-557 [AVG]
 - PlacementAdviceService-By scenario API Calls queue time-558 [AVG]
 - PlacementAdviceService-By scenario API placement calls response time-548 [AVG]
 - PlacementAdviceService-By scenario API Calls queue time-540 [AVG]
 - PlacementAdviceService-By scenario API Calls queue time-548 [AVG]
 - PlacementAdviceService-By scenario API Calls queue time-539 [AVG]
 - PlacementAdviceService-By scenario API placement calls queue time-539 [AVG]
 - PlacementAdviceService-By scenario API Calls queue time-541 [AVG]
 - PlacementAdviceService-By scenario API Calls queue time-556 [AVG]
 - PlacementAdviceService-By scenario API Calls queue time-543 [AVG]
- ... more series ...

Total Volume - Stacked - (hourly)



- PlacementAdviceService-API Calls throughput [AVG]
- PlacementAdviceService-By scenario API Calls throughput-54 [AVG]
- PlacementAdviceService-By scenario API Calls throughput-54 [AVG]
- PlacementAdviceService-By scenario API Calls throughput-55 [AVG]
- PlacementAdviceService-By scenario API Calls throughput-54 [AVG]
- PlacementAdviceService-By scenario API Calls throughput-55 [AVG]
- PlacementAdviceService-By scenario API Calls throughput-55 [AVG]
- PlacementAdviceService-By scenario API Calls throughput-54 [AVG]
- PlacementAdviceService-By scenario API Calls throughput-54 [AVG]
- PlacementAdviceService-By scenario API Calls throughput-54 [AVG]
- PlacementAdviceService-By scenario API placement calls throughput-549 [AVG]
- PlacementAdviceService-By scenario API placement calls throughput-539 [AVG]
- PlacementAdviceService-By scenario API Calls throughput-53 [AVG]
- PlacementAdviceService-By scenario API placement calls throughput-548 [AVG]
- PlacementAdviceService-By scenario API placement calls throughput-558 [AVG]
- PlacementAdviceService-By scenario API placement calls throughput-556 [AVG]
- PlacementAdviceService-By scenario API placement calls throughput-541 [AVG]
- PlacementAdviceService-By scenario API placement calls throughput-542 [AVG]
- PlacementAdviceService-By scenario API placement calls throughput-540 [AVG]
- PlacementAdviceService-By scenario API placement calls throughput-543 [AVG]
- PlacementAdviceService-By scenario API placement calls throughput-557 [AVG]

Total Volume - Stacked - (hourly)

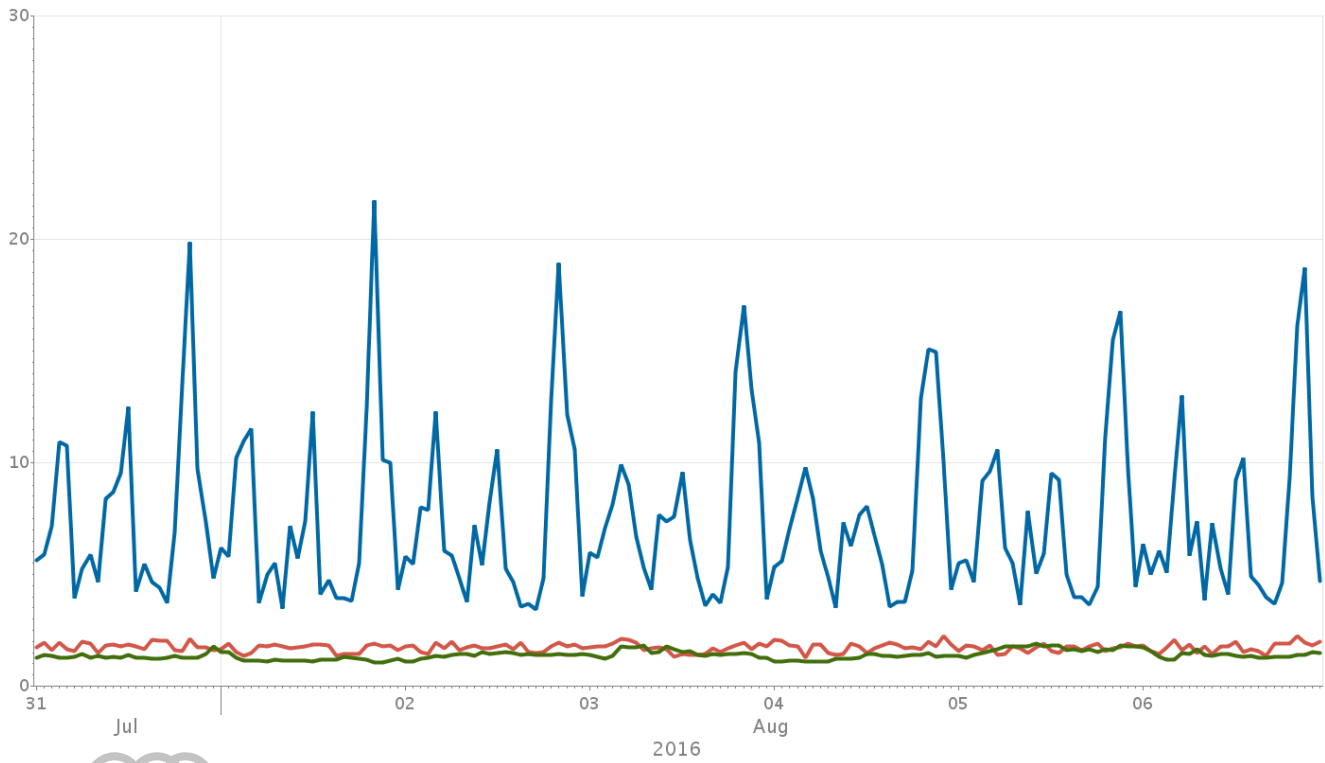


- DatasourcesLoad-Warehouse processing count [SUM]
- DatasourcesLoad-Loaded time series rows-AGGREGATE [SUM]
- DatasourcesLoad-Loaded time series samples by datasource-ETL - HP OPENVIEW PERFORMANCE INSIGHT - A...
- DatasourcesLoad-Loaded time series-AGGREGATE [SUM]
- DatasourcesLoad-Loaded time series samples by datasource-ETL - HP OPENVIEW PERFORMANCE INSIGHT - A...
- DatasourcesLoad-Loaded configuration rows-AGGREGATE [SUM]
- DatasourcesLoad-Loaded BCO series by datasource-ETL - VMWARE - PWAUSWVMVC10 - PROD [SUM]
- DatasourcesLoad-Loaded BCO series by datasource-ETL - VMWARE - VCENTER EXTRACTOR SERVICE...
- DatasourcesLoad-Loaded time series samples by datasource-ETL - VMWARE - PWAUSWVMVC10 - PR...
- DatasourcesLoad-Loaded time series samples by datasource-ETL - VMWARE - VCENTER EXTRACTOR...
- DatasourcesLoad-Loaded time series samples by datasource-ETL - CA WILY - PERFORMANCE METRI...
- DatasourcesLoad-Loaded configuration samples by datasource-ETL - HP OPENVIEW PERFORMANCE IN...
- DatasourcesLoad-Loaded BCO series by datasource-ETL - VMWARE - VCENTER EXTRACTOR SERVICE...
- DatasourcesLoad-Loaded time series samples by datasource-ETL - VMWARE - VCENTER HISTOR... EX...
- DatasourcesLoad-Loaded time series samples by datasource-ETL - VMWARE - VCENTER EXTRACTOR...
- DatasourcesLoad-Loaded configuration samples by datasource-ETL - VMWARE - PWAUSWVMVC10 - P...
- DatasourcesLoad-Loaded time series samples by datasource-ETL - HP OPENVIEW PERFORMANCE INSIGHT...
- DatasourcesLoad-Loaded time series samples by datasource-ETL - RMAS OSC [SUM]
- DatasourcesLoad-Loaded configuration samples by datasource-ETL - VMWARE - VCENTER EXTRACTO...
- DatasourcesLoad-Loaded BCO series by datasource-ETL - VMWARE PFTWSWVMVC10 - PROD [SUM]
- DatasourcesLoad-Loaded BCO series by datasource-ETL - HP OPENVIEW PERFORMANCE INSIGHT - A...
- DatasourcesLoad-Loaded time series samples by datasource-ETL - BMC CMM - PROD - REPORT CL...
- DatasourcesLoad-Loaded time series samples by datasource-ETL - B2B SERVICES ETL [SUM]
- DatasourcesLoad-Loaded time series samples by datasource-ETL - VMWARE PFTWSWVMVC10 - PRO...
- DatasourcesLoad-Loaded time series samples by datasource-ETL - BMC CMM - TEST [SUM]

... more series ...

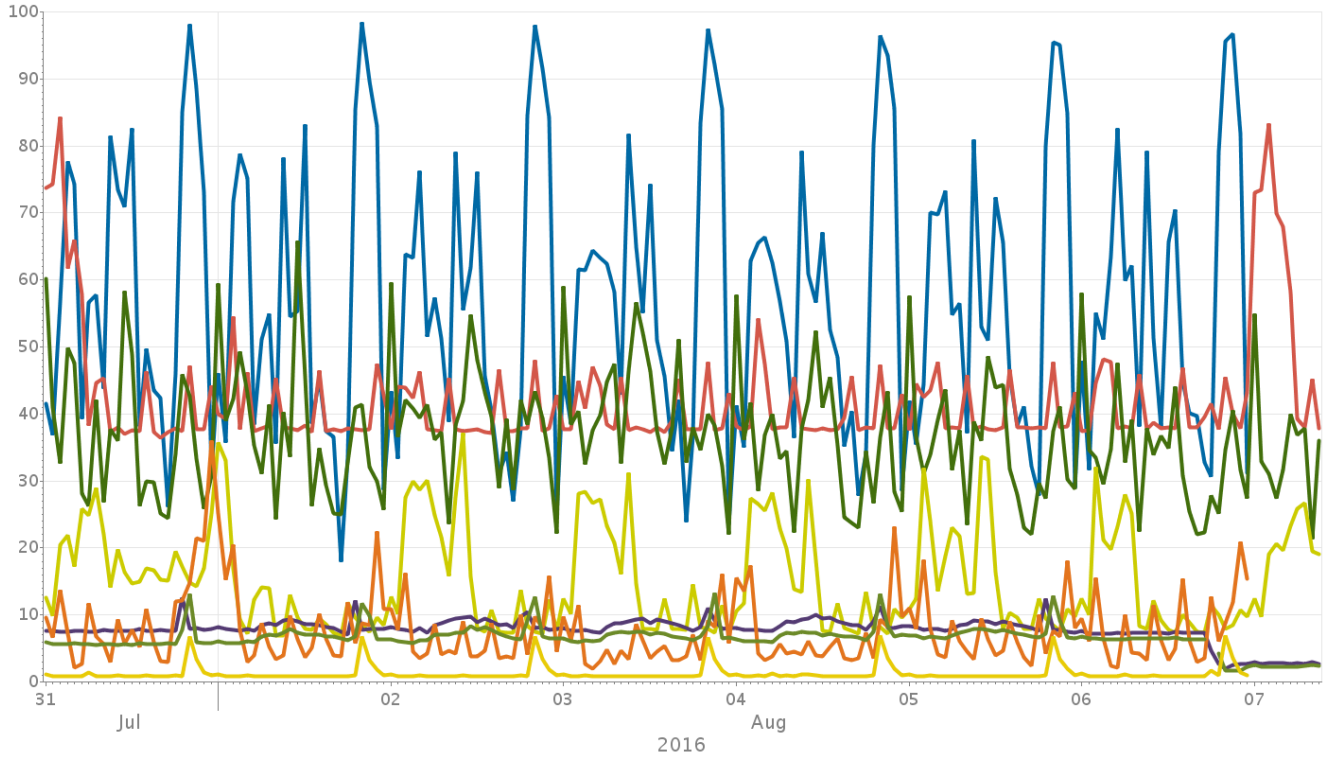
Analysis: Database Servers

CPU Run Queue Length (hourly)



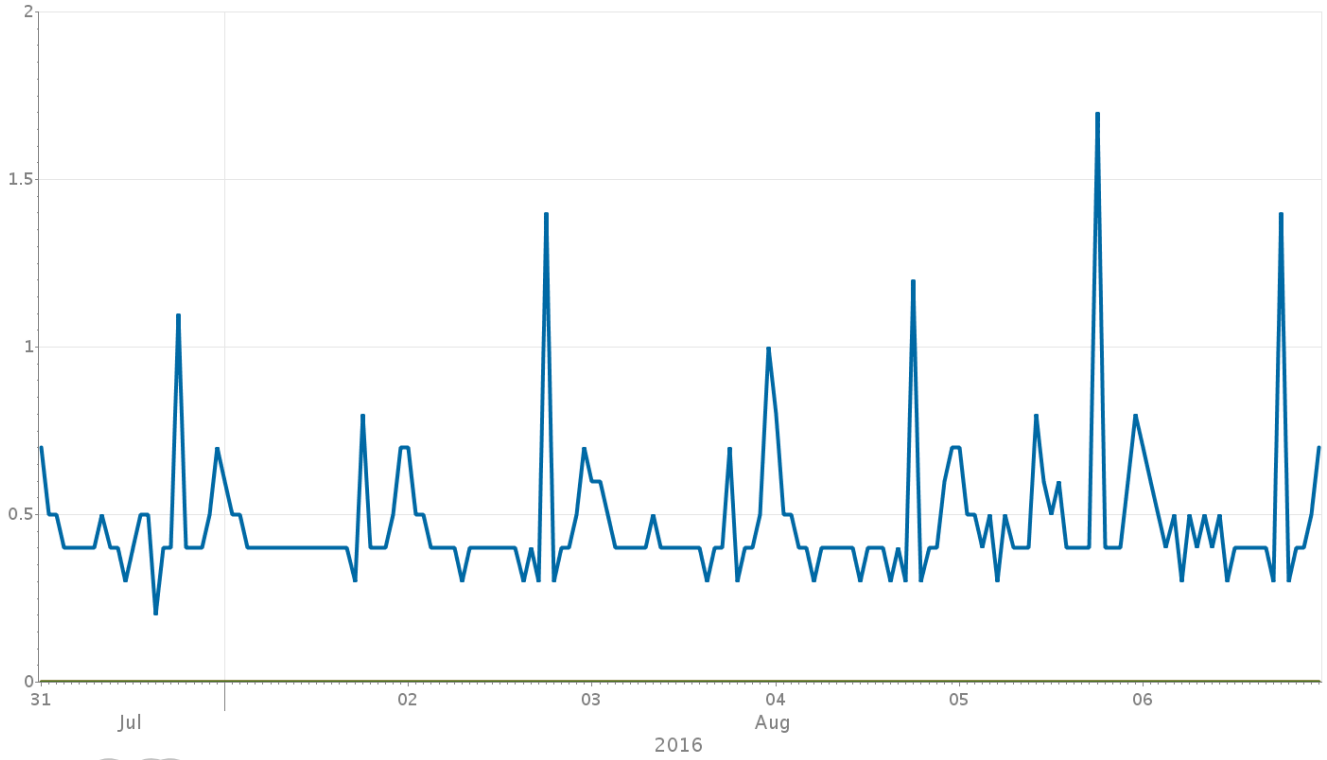
- mddb01p-CPU Run Queue Length [AVG]
- mddb02p-CPU Run Queue Length [AVG]
- ntdb01-CPU Run Queue Length [AVG]

CPU Utilization % (hourly)



- pwausxbm db01p-CPU Utilization % [AVG]
- pwauswbm p02-CPU Utilization % [AVG]
- pwauslbm pp01-CPU Utilization % [AVG]
- pwauslbm pp02-CPU Utilization % [AVG]
- pwauslht ky03-CPU Utilization % [AVG]
- pwaussm db01-CPU Utilization % [AVG]
- pwauslht ky04-CPU Utilization % [AVG]
- pwausxbm db02p-CPU Utilization % [AVG]

Memory Page Output Rate (hourly)



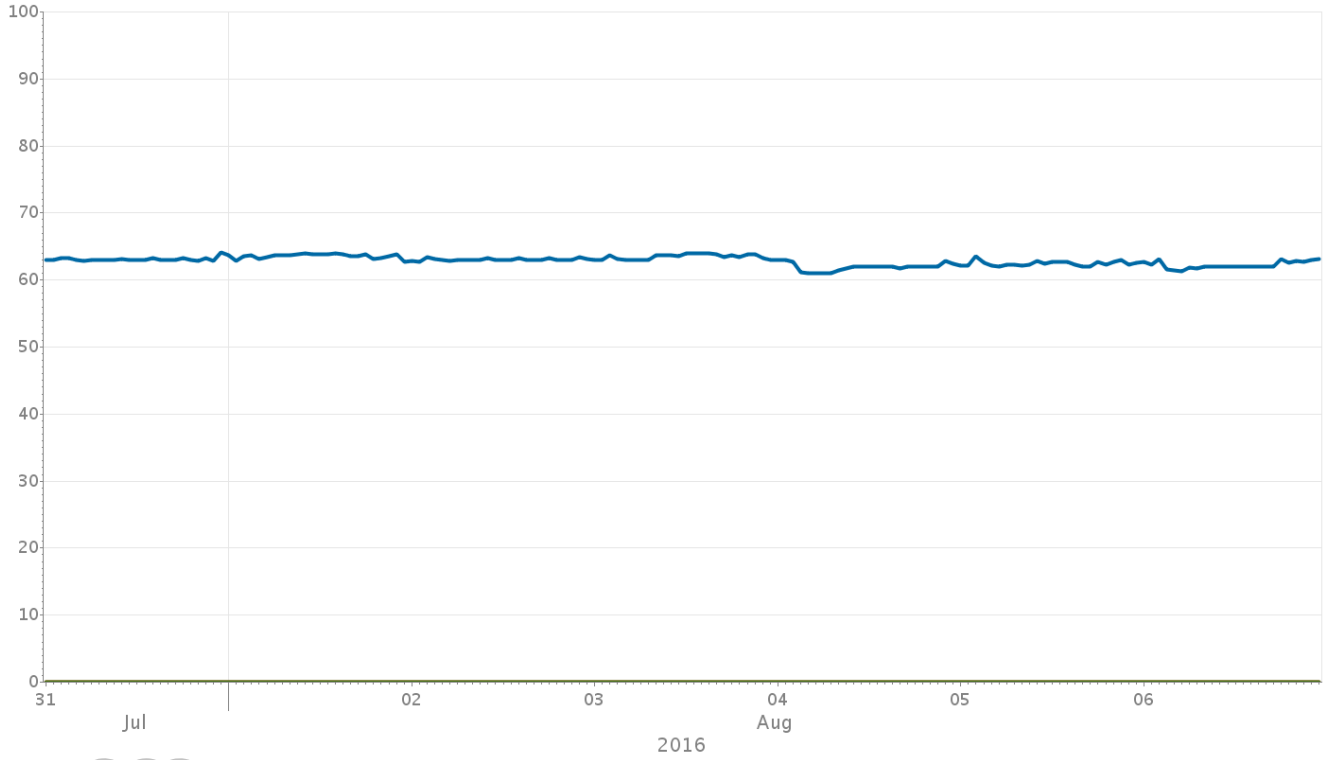
- ~~pw-055-01-ntdb01-Memory Page Output Rate [AVG]~~
- ~~pw-055-01-mcdb01p-Memory Page Output Rate [AVG]~~
- ~~pw-055-01-mcdb02p-Memory Page Output Rate [AVG]~~

Memory Utilization % (hourly)



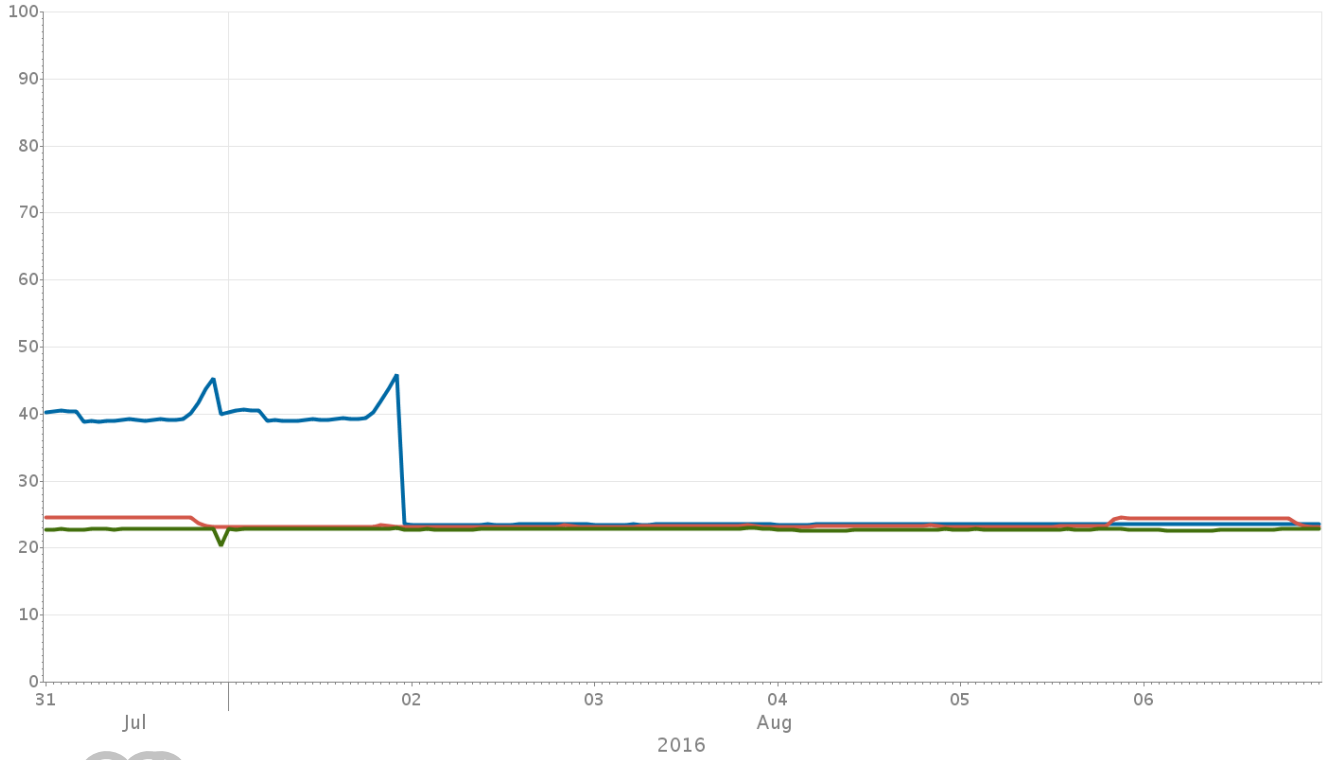
- owausxbm db01p-Memory Utilization % [AVG]
- owausxbm db02p-Memory Utilization % [AVG]
- owaussmg db01-Memory Utilization % [AVG]
- owauslbm app01-Memory Utilization % [AVG]
- owauslbm app02-Memory Utilization % [AVG]
- owauslih xy04-Memory Utilization % [AVG]
- owauslih xy03-Memory Utilization % [AVG]
- owausxbm ap02-Memory Utilization % [AVG]

Swap Space Utilization % (hourly)



- (dwauss) mntdb01-Swap Space Utilization % [AVG]
- (pwauss) mcdb01p-Swap Space Utilization % [AVG]
- (dwauss) mcdb02p-Swap Space Utilization % [AVG]

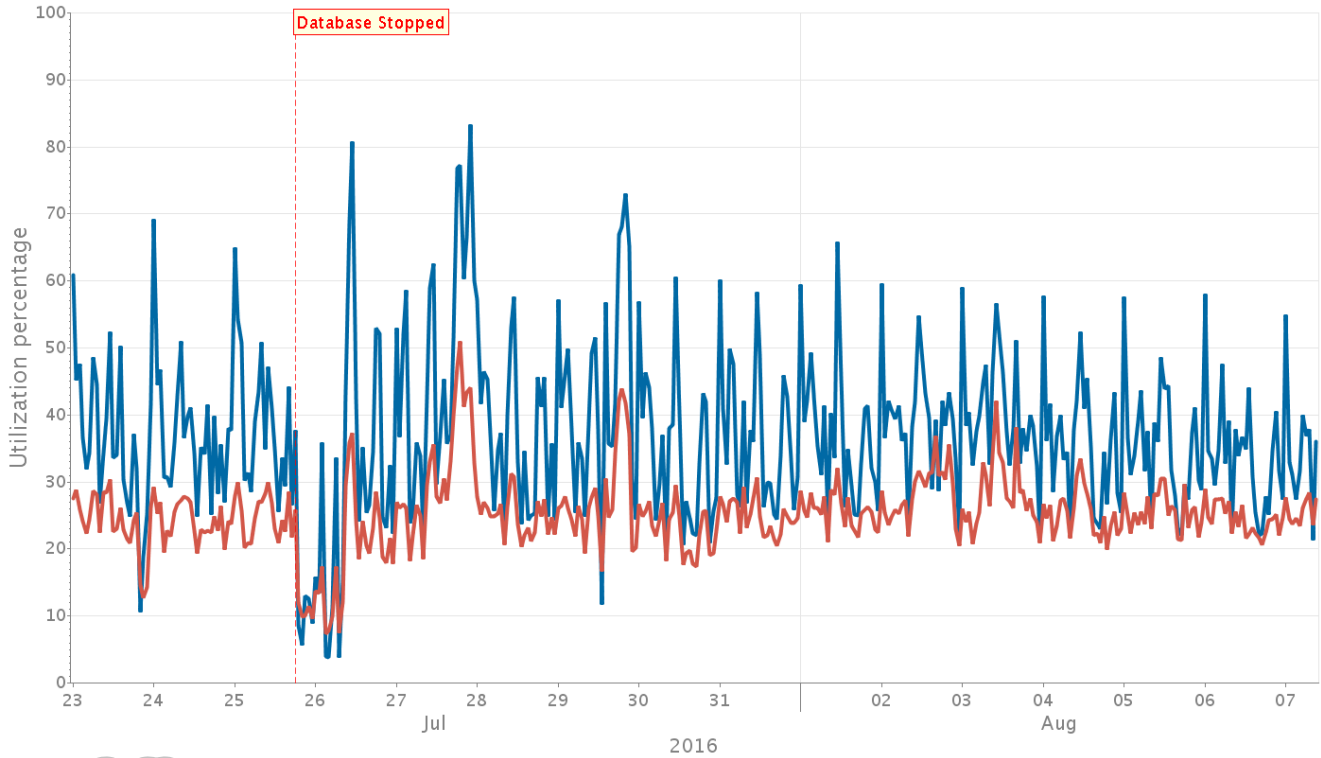
Total File Systems Utilization % (hourly)



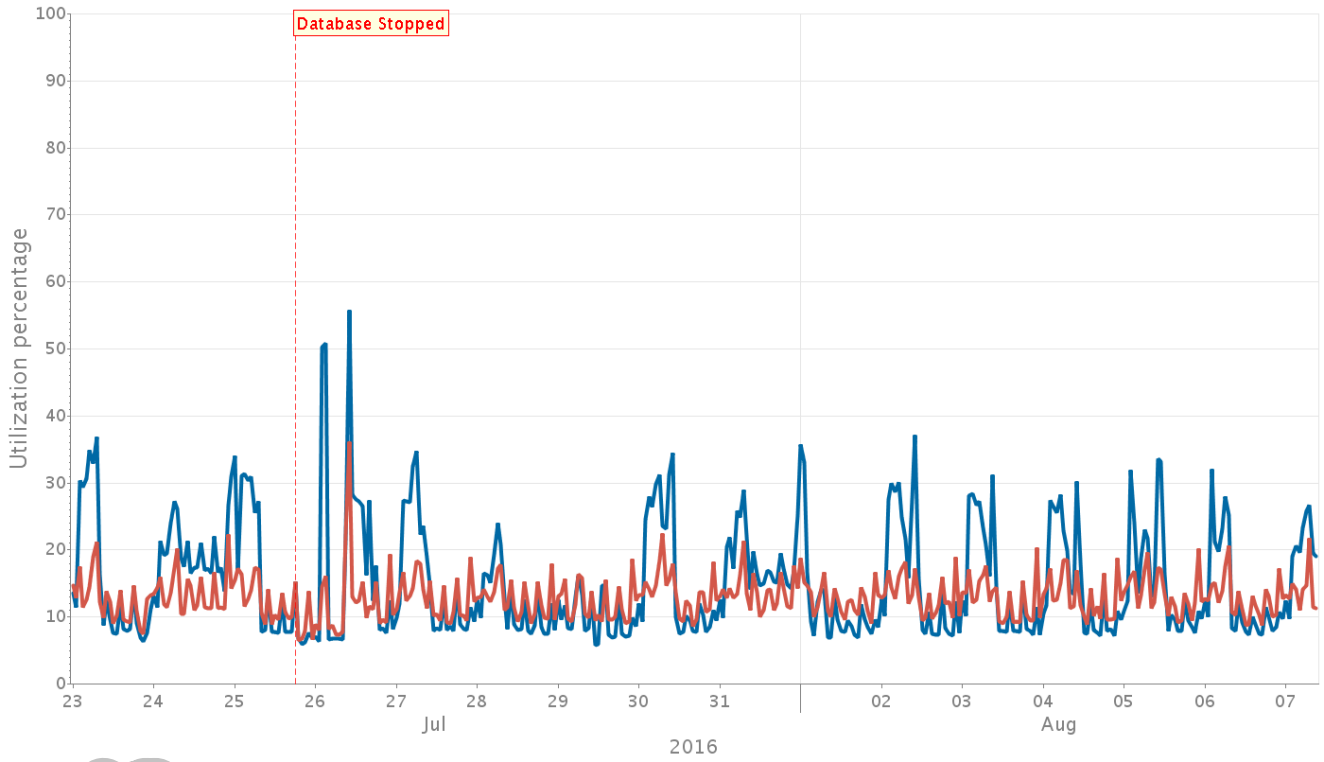
- pwaus\bmcd01p-Total File Systems Utilization % [AVG]
- pwaus\bmcd02p-Total File Systems Utilization % [AVG]
- pwaus\mntdb01-Total File Systems Utilization % [AVG]

Analysis: CPU, MEM, Swap, RunQueue for BMC Capacity Optimization (BCO) Distributed PRD

pwauslb-mcapp01
(hourly)

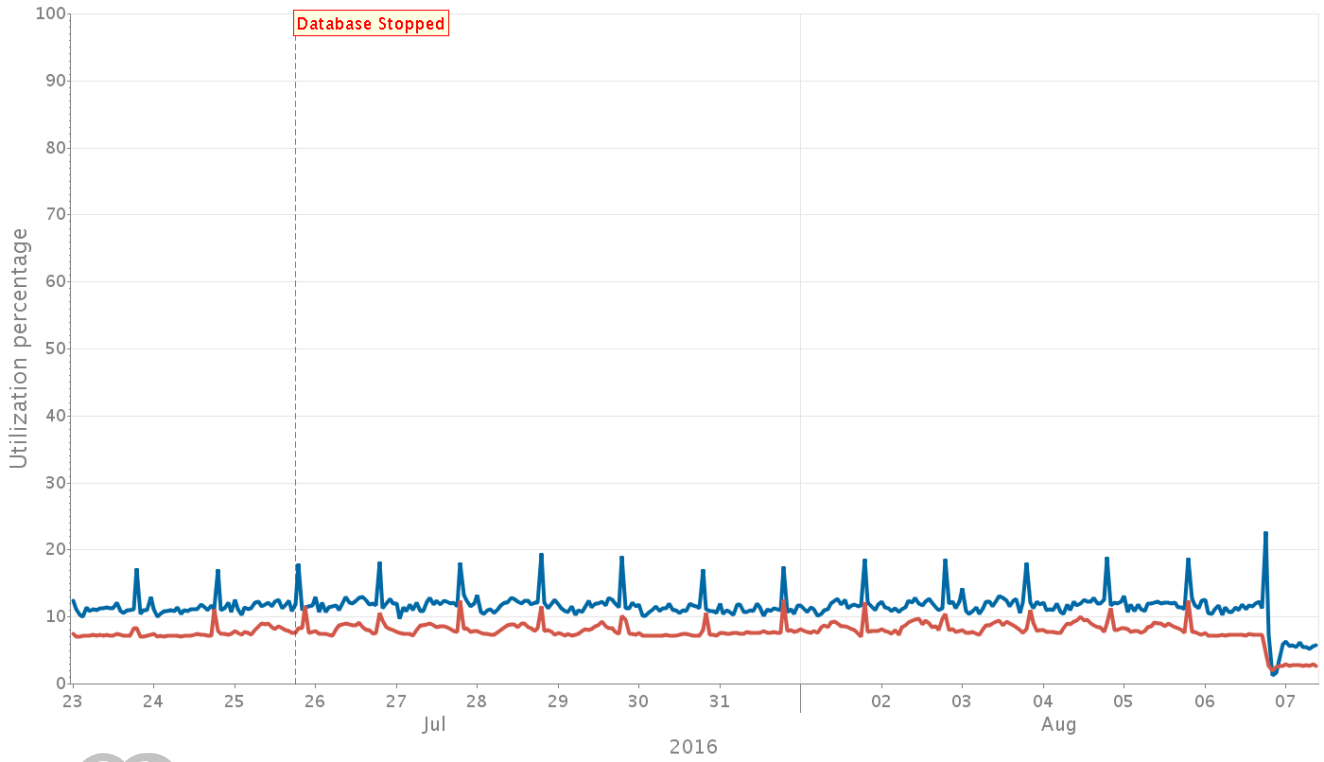


pvaurlbomcapp02
(hourly)



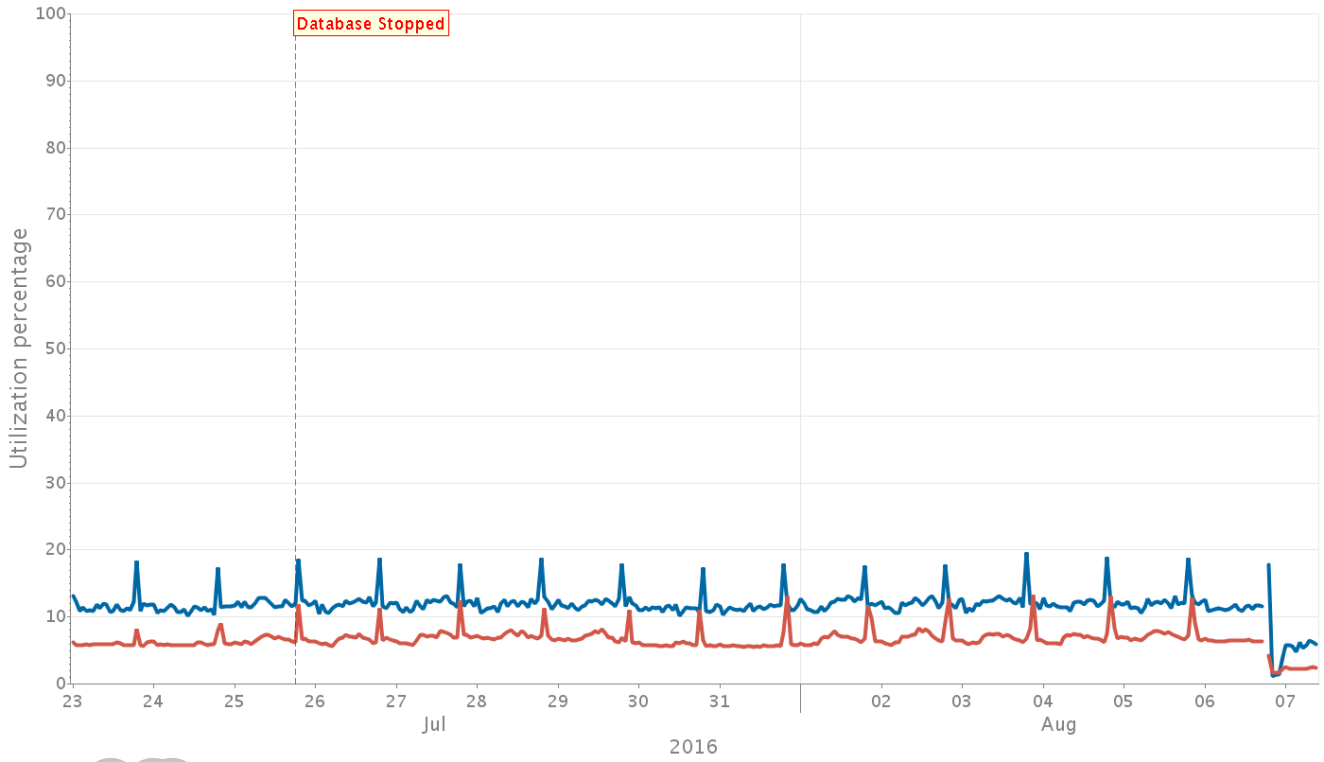
- pvaurlbomcapp02-CPU Utilization % [AVG]
- pvaurlbomcapp02-Memory Utilization % [AVG]
- Incident

pywau01ihspxy03
(hourly)



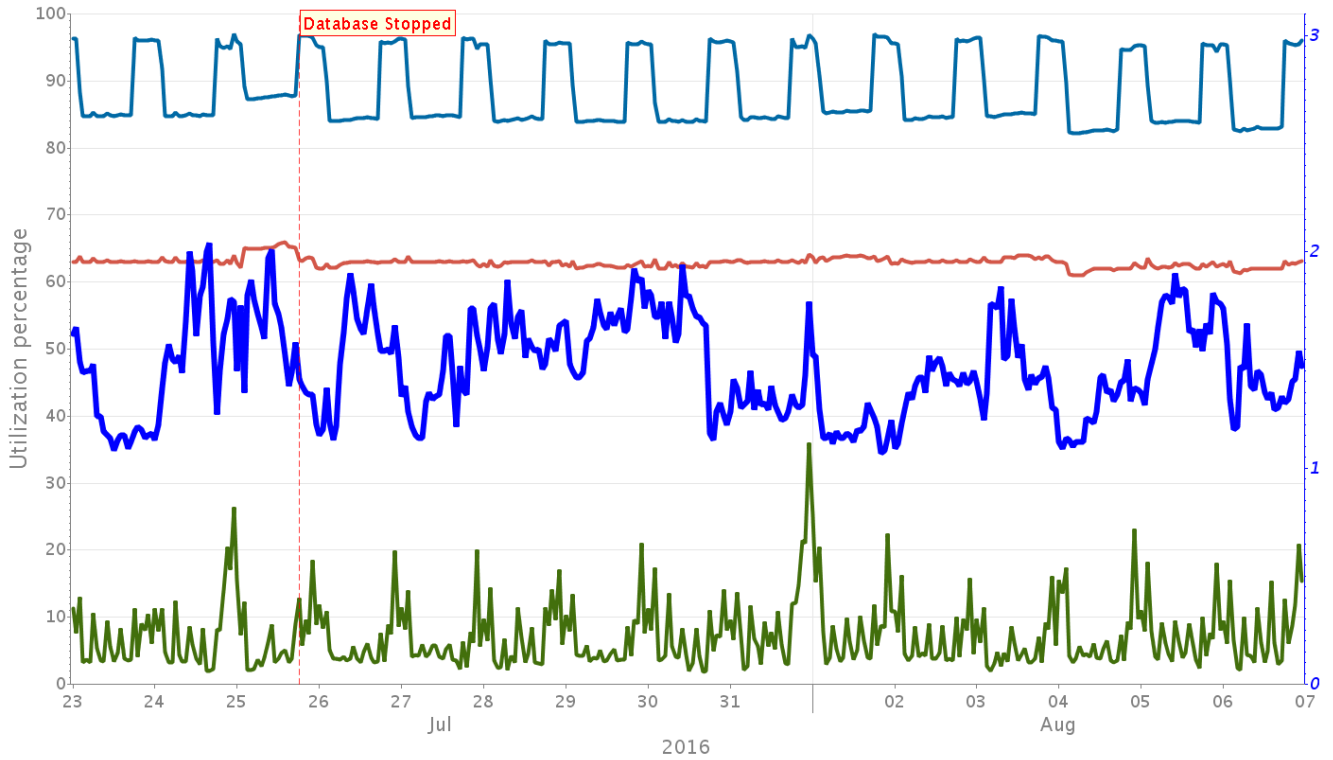
- pywau01ihspxy03-Memory Utilization % [AVG]
- pywau01ihspxy03-CPU Utilization % [AVG]
- Incident

pwau0sl1 spxy04
(hourly)



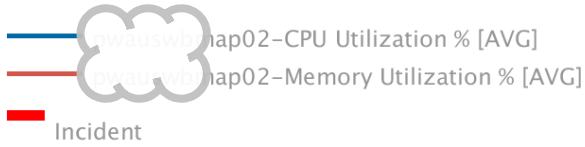
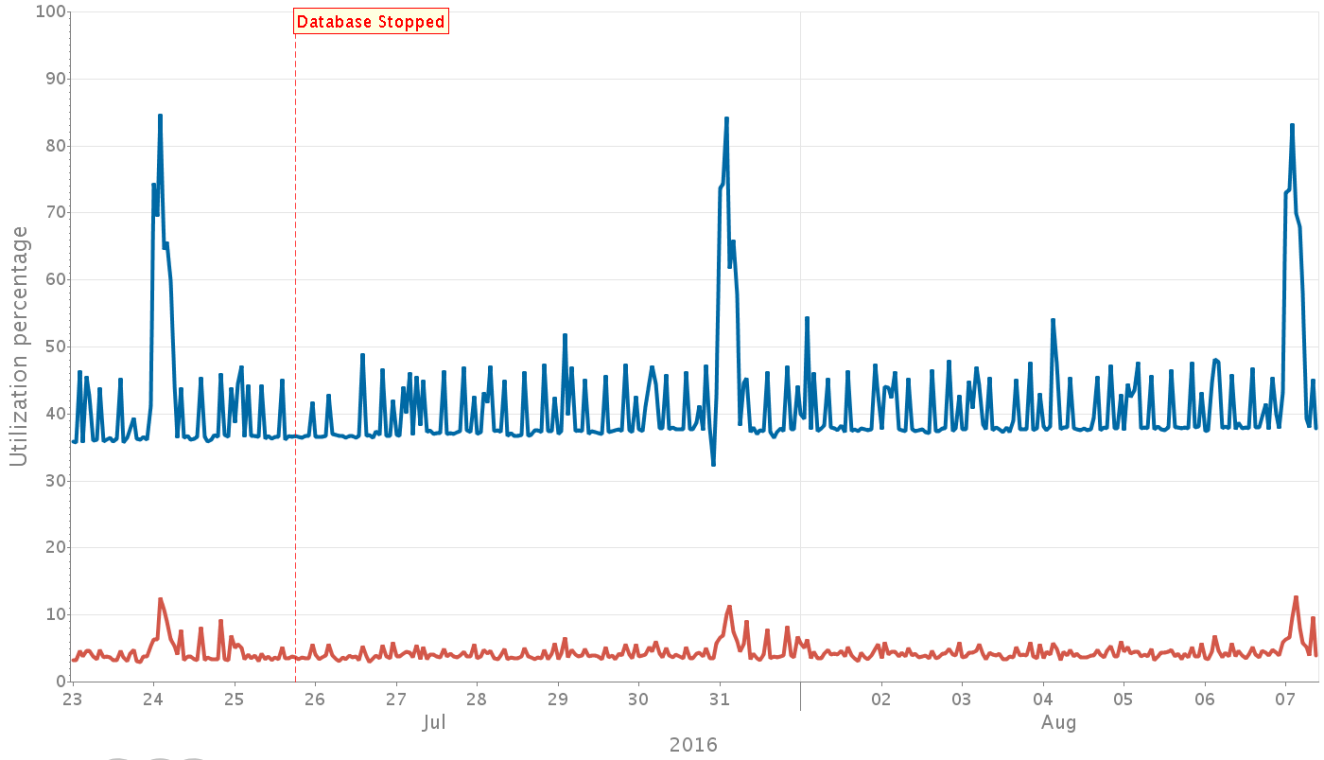
- pwau0sl1 spxy04-Memory Utilization % [AVG]
- pwau0sl1 spxy04-CPU Utilization % [AVG]
- Incident

owaussmntdb01
(hourly)

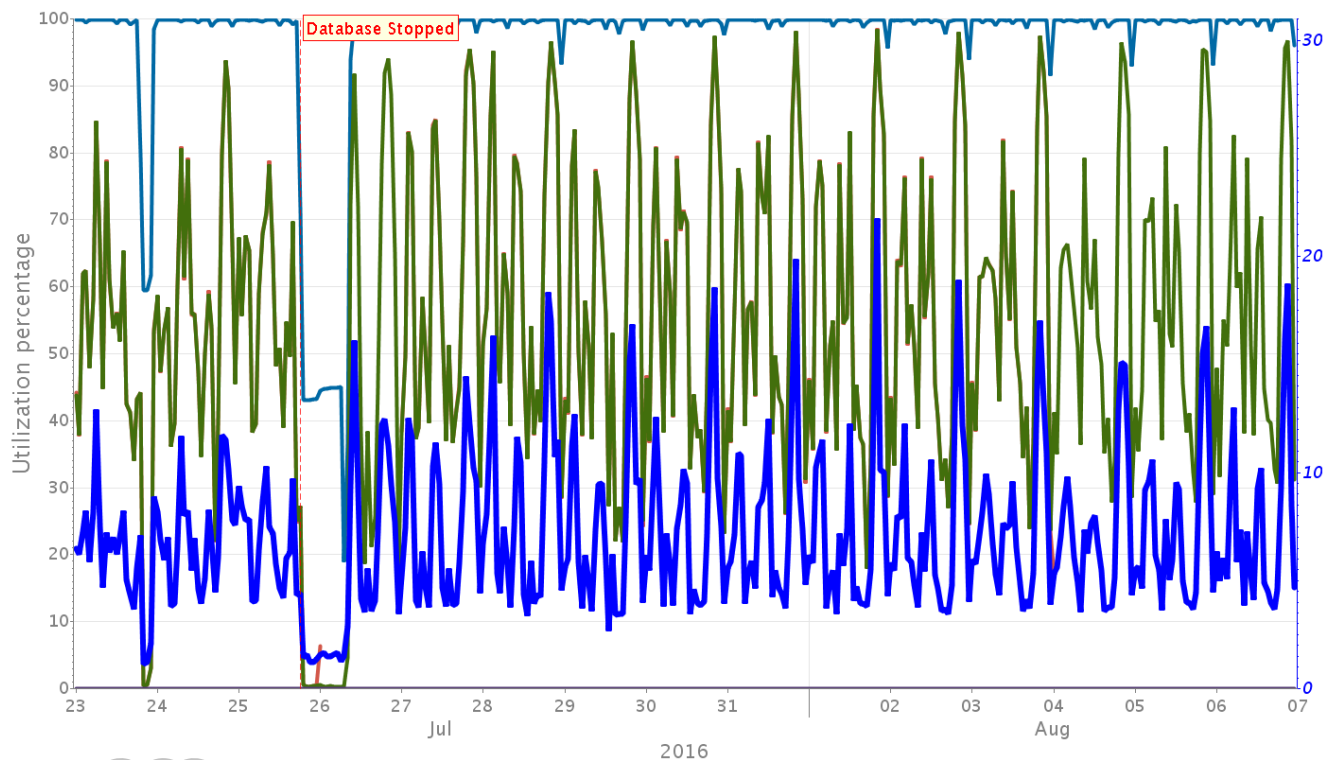


- owaussmntdb01-Memory Utilization % [AVG]
- owaussmntdb01-Swap Space Utilization % [AVG]
- owaussmntdb01-CPU Utilization % [AVG]
- owaussmntdb01-CPU Run Queue Length [AVG]
- Incident

pwauusw_bmap02
(hourly)

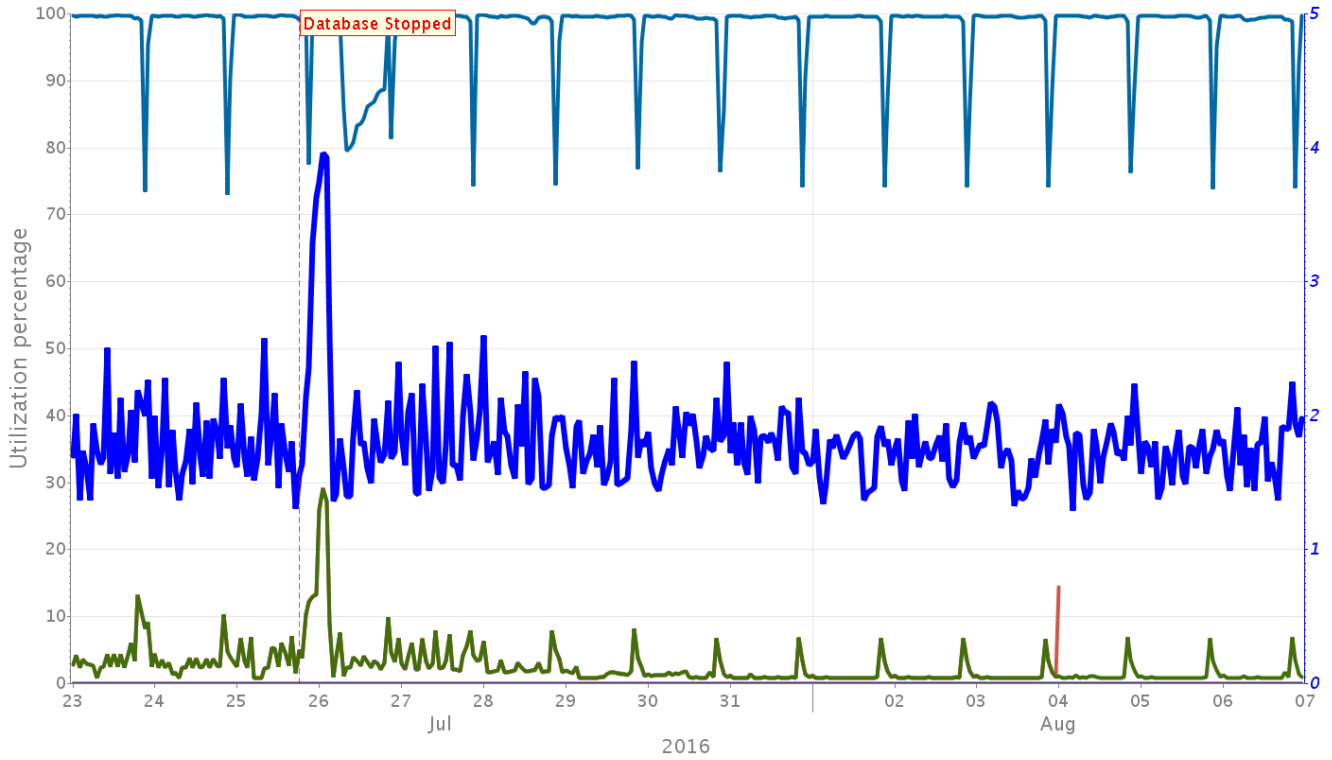


pwau5xb mcdb01p
(hourly)



- pwau5xb mcdb01p-Memory Utilization % [AVG]
- pwau5xb mcdb01p-CPU Utilization % from NMON [AVG]
- pwau5xb mcdb01p-CPU Utilization % [AVG]
- pwau5xb mcdb01p-Swap Space Utilization % [AVG]
- RIGHT AXIS
- pwau5xb mcdb01p-CPU Run Queue Length [AVG]
- █ Incident

omcdb02p
(hourly)



- omcdb02p-Memory Utilization % [AVG]
 - omcdb02p-CPU Utilization % from NMON [AVG]
 - omcdb02p-CPU Utilization % [AVG]
 - omcdb02p-Swap Space Utilization % [AVG]
- RIGHT AXIS:
- omcdb02p-CPU Run Queue Length [AVG]
 - Incident

Analysis: Min Idle Workers

No data available for this analysis